

# Dispermill Mixing Elements

Mixing elements are crucial to the dispersing process. Different mixing elements are utilized to optimize the quality of the operation. We offer a wide range of mixing elements that can be used for different applications. All our mixing elements are made of high quality stainless steel which are easy to clean.

## DISPERSING DISCS

We offer three different types of discs with 6mm center hole, 5/16" female thread or M12 female thread. Sizes vary between 20mm and 200mm.

## BUTTERFLY PROPELLERS

We offer one type of butterfly propellers with 5/16" female thread. Sizes vary between 40mm and 120mm.

## MARINE PROPELLERS

We offer one type of marine propellers with 5/16" female thread. Sizes vary between 40mm and 150mm.

## GRINDING DISCS

We offer three different types of grinding discs with 6mm center hole and 5/16" female thread. Sizes vary between 30mm and 120mm.

## GRINDING MEDIA

We offer three different types of grinding media with for an optimal grinding and milling process.



## FEATURES

- ✓ Stainless steel
- ✓ High quality design
- ✓ Easy to clean
- ✓ Various sizes

**Dispersing disc with 6 mm hole (Orange-line)**


Ø	Order code
20 mm	30-1005
30 mm	30-1004
40 mm	30-1009
50 mm	30-1010
60 mm	30-1011

**Dispersing disc with 5/16" female thread (Discovery & X-Proof FR)**


Ø	Order code
40 mm	30-1002
50 mm	30-1001
60 mm	30-1018
70 mm	30-1025
80 mm	30-1019
90 mm	30-1003
100 mm	30-1017
125 mm	30-1015
150 mm	30-1124

**Dispersing disc with M12 female thread (H-series & X-Proof HX)**

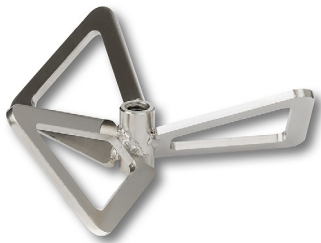

Ø	Order code
100 mm	30-1106
125 mm	30-1103
150 mm	30-1107
175 mm	30-1121
200 mm	30-1122

**Dispersing disc with 16 mm hole (M-series)**


Ø	Order code
175 mm	30-1168
200 mm	30-1162
225 mm	30-1031
250 mm	30-1169
275 mm	30-1043
300 mm	30-1154
325 mm	30-1045
350 mm	30-1046

## BUTTERFLY

### Butterfly propeller with 5/16" or M12 female thread



Ø	Order code
40 mm (Discovery & X-Proof FR)	30-1070
60 mm (Discovery & X-Proof FR)	30-1027
80 mm (Discovery & X-Proof FR)	30-1071
100 mm (Discovery & X-Proof FR)	30-1028
120 mm (Discovery & X-Proof FR)	30-1030
150 mm (Discovery & X-Proof FR)	30-1135
100 mm (H-series)	30-1152
150 mm (H-series)	30-1161
200 mm (H-series)	30-1150

## MARINE PROPELLERS

### Marine propellers with 5/16" female thread (Discovery & X-Proof FR)



Ø	Order code
40 mm	30-1016
55 mm	30-1036
75 mm	30-1020
100 mm	30-1021
125 mm	30-1072
150 mm	30-1073

## SPECIALS

### Mixing blade 8 holes with 5/16" female thread (Discovery & X-Proof FR)

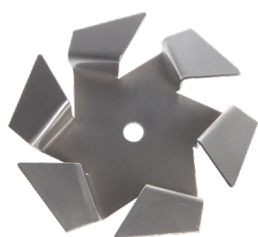


Ø	Order code
60 mm	30-1104

### Ring blade with 5/16" female thread (Discovery & X-Proof FR)



Ø	Order code
60 mm	30-1123

**Tornado blade with 5/16" female thread or M12 female thread**


Ø	Order code
100 mm (Discovery & X-Proof FR)	30-1026
170 mm (H-series & X-Proof HX)	30-1052

**Cupmixer with 5/16" female thread (Discovery & X-Proof FR)**


Ø	Order code
60 mm	30-1099
80 mm	30-1038
100 mm	30-1100
120 mm	30-1040

## GRINDING DISCS

**Double grinding disc with 6 mm hole or 5/16" female thread**


Ø	Order code
30 mm (Orange-line)	30-1057
40 mm (Orange-line)	30-1058
60 mm (Discovery & X-Proof FR)	30-1006
80 mm (Discovery & X-Proof FR)	30-1065
100 mm (Discovery & X-Proof FR)	30-1066
120 mm (Discovery & X-Proof FR)	30-1067

**Single grinding disc with 5/16" female thread (Discovery & X-Proof FR)**


Ø	Order code
60 mm	30-1008
80 mm	30-1063
100 mm	30-1064
120 mm	30-1068

**Zirconia Beads, Yttrium stabilized (6,05 kg/l) - hardness: 1400 HV<sub>10</sub> - per 1 kg**



Ø	Order code
0,30 - 0,40 mm	23-11150
0,40 - 0,50 mm	23-11151
0,40 - 0,60 mm	23-11152
0,60 - 0,80 mm	23-11153
0,80 - 1,00 mm	23-11082
1,00 - 1,20 mm	23-11154
1,20 - 1,40 mm	23-11155
1,40 - 1,60 mm	23-10334

**Zirconia Beads, Cerium stabilized (6,13 kg/l) - hardness: 1050 HV<sub>10</sub> - per 10 kg**



Ø	Order code
0,60 - 0,80 mm	23-11156
0,80 - 1,00 mm	23-11157
1,00 - 1,20 mm	23-11158
1,20 - 1,40 mm	23-11159
1,40 - 1,60 mm	23-11160
1,60 - 1,80 mm	23-11161
1,80 - 2,00 mm	23-11162
2,00 - 2,20 mm	23-11445

**Zirconium Silicate Beads (4,1 kg/l) - hardness: 1000 HV<sub>10</sub> - per 25 kg**



Ø	Order code
0,60 - 0,80 mm	23-11437
0,80 - 1,00 mm	23-11438
1,00 - 1,20 mm	23-11439
1,20 - 1,40 mm	23-11440
1,40 - 1,60 mm	23-11441
1,60 - 1,80 mm	23-11442
1,80 - 2,00 mm	23-11443
2,00 - 2,20 mm	23-11444

**Glass beads type SL (2,59 kg/l) - hardness: 6 Mohs - per 60 kg**



Ø	Order code
0,50 - 0,75 mm	23-11142
0,75 - 1,00 mm	23-11143
1,00 - 1,40 mm	23-11144
1,30 - 1,70 mm	23-11145
1,70 - 2,10 mm	23-11146
2,00 - 2,50 mm	23-11147
2,50 - 3,00 mm	23-11148
3,30 - 3,90 mm	23-11149